



UMI GOURMET EMPIRE

海洋美食帝国

(003559469-U)



PRODUCT CATALOGUE

June 2024

ORDERING

PLACE ORDER BY USING ITEM CODE AND QUANTITY REQUIRED. PLEASE ALSO STATE YOUR DELIVERY DAY AND DELIVERY ACCEPTANCE TIME. AN INVOICE WILL BE SENT BACK TO YOU FOR CONFIRMATION.

DELIVERY

ALL ORDERS WILL REQUIRE A 3 DAY PREPARATION LEAD TIME. DELIVERY DAYS ARE MONDAY AND FRIDAY. FOR MONDAY DELIVERY, ORDERS MUST REACH US NOT LATER THAN THE THURSDAY BEFORE AND FOR FRIDAY DELIVERY ORDERS MUST REACH US NO LATER THAN TUESDAY.

TERMS AND CONDITIONS

"ORDERS VIA WHATSAPP IS DEEMED AS ORDER MADE AND IS FINAL UPON ACCEPTANCE OF INVOICE SENT FOR CONFIRMATION.

- ORDERS MUST BE CHECKED THOROUGHLY. ONCE ACCEPTED, ALL GOODS ARE DEEMED TO BE IN GOOD ORDER AND SOLD.
- PRICE ARE SUBJECT TO CHANGE WITHOUT PRIOR NOTICE."

DISCLAIMER

"ALL INFORMATION, PRICES, PICTURES ARE DEEMED CORRECT AT TIME OF PRINT. PICTURES ARE FOR ILLUSTRATION PURPOSE ONLY. ACTUAL PRODUCT MAY DIFFER. ALL INFORMATION IS SUBJECT TO E&OE."

ABBREVIATION LIST

IQF = Individually Quick Frozen 速冻	NW/NET = Net Weight 净重	PBO = Pin Bones Out 去中骨去刺
VP = Vacuum Packed 真空	GW/GROSS = Gross Weight 总重量	HOSO = Head On, Shell On 带头带壳虾
GLZ = Glazing 冰衣	Semi Block = Ice Block 扳冻	PD = Peeled & De-veined 虾仁, 去肠
PUD = Peeled & Un-deveined 虾仁, 不去肠	PTO = Peeled & Tail On 去壳带尾虾 (凤尾虾)	CPTO = Cooked, Peeled Tail On 熟凤尾虾



MS1500
1066-01/2012



MS1500
1062-06/2007

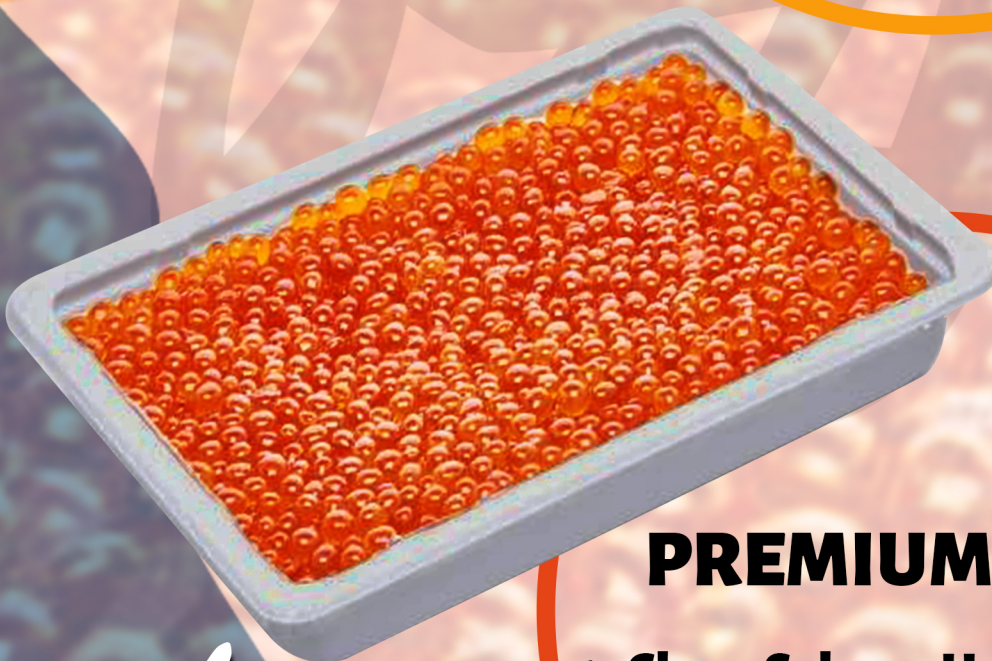




PREMIUM JAPAN BAFUN UNI (NARABE STYLE)

顶级日本马粪海胆
±250g / Tray

**Weekly Market
Price**



PREMIUM IKURA

1 - Chum Salmon Hokkaido Japan
Without alcohol content
1kg / Packet

2 - Chum Salmon USA
With alcohol content
500g / Packet



**AIR
FLOWN
PRODUCT**

NO	DESCRIPTION	PACKING	QTY	AMOUNT (RM)
A	CRAB SERIES 螃蟹类:			
1	CRAB-SOFT SHELL XL PREMIUM 70/100 GM/PC (1KGx10PKT; NO GLAZING)-软壳蟹 (全只) (NIKUDO BRAND;SABAH PREMIUM)	10PKTX1KG;10 KG/CTN,100% NW, NO GLAZING	1 KG	69.00
2	CRAB-SOFT SHELL XL PREMIUM 100/120 GM/PC (1KGx10PKT; NO GLAZING) -软壳蟹 (全只) (NIKUDO BRAND;SABAH PREMIUM)	10PKTX1KG;10 KG/CTN,100% NW, NO GLAZING	1 KG	69.00
3	CRAB-SOFT SHELL XL PREMIUM 120/150 GM/PC (1KGx10PKT; NO GLAZING) -软壳蟹 (全只) (NIKUDO BRAND;SABAH PREMIUM)	10PKTX1KG;10 KG/CTN,100% NW, NO GLAZING	1 KG	68.00
4	CRAB-SOFT SHELL XL PREMIUM 150/200 GM/PC (1KGx10PKT; NO GLAZING) -软壳蟹 (全只) (NIKUDO BRAND;SABAH PREMIUM)	10PKTX1KG;10 KG/CTN,100% NW, NO GLAZING	1 KG	68.00
5	CRAB-SOFT SHELL XL PREMIUM 200UP GM/PC (1KGx10PKT; NO GLAZING) -软壳蟹 (全只) (NIKUDO BRAND;SABAH PREMIUM)	10PKTX1KG;10 KG/CTN,100% NW, NO GLAZING	1 KG	68.00
6	CRAB-BABY CRAB CLEANED 小螃蟹 (专用油炸小食)	1KG/PKT, 20PKT/CTN	1 KG	11.00
7	CRAB-SOFT SHELL XL PREMIUM 70/100 GM/PC (10KG; 30% GLAZING) 软壳蟹 (整只)(Indonesia)	10KG/CTN	1 KG	46.00
8	CRAB-SOFT SHELL XL PREMIUM 100/120 GM/PC (10KG;30% GLAZING) 软壳蟹 (整只)(Indonesia)	10KG/CTN	1 KG	46.00
9	CRAB-SOFT SHELL XL PREMIUM 120/150 GM/PC (10KG;30% GLAZING) 软壳蟹 (整只)(Indonesia)	10KG/CTN	1 KG	46.00
10	CRAB-SOFT SHELL XL PREMIUM 150/200 GM/PC (10KG;30% GLAZING) 软壳蟹 (整只)(Indonesia)	10KG/CTN	1 KG	46.00
11	CRAB-MUD CRAB MEAT (NET: 250GM) (40PKT/CTN) (Plain VP) 肉蟹肉	250G/PKT, 40PKT/CTN	1 PKT	25.00
12	CRAB-FLOWER IQF 80-100GM/PC (10-12PCS/KG) 花蟹 (整只)	10KG	1 KG	13.00
13	CRAB-FLOWER IQF 100-120GM/PC (8-10PCS/KG) 花蟹 (整只)	10KG/CTN	1 KG	20.00
14	CRAB-FLOWER IQF 120-150GM/PC (6-8PCS/KG) 花蟹 (整只)	10KG/CTN	1 KG	21.00
15	CRAB-FLOWER IQF 150-200/PC (4-6PCS/KG) 花蟹 (整只)	10KG/CTN	1 KG	30.00
16	CRAB-FLOWER IQF 200-300GM/PC (2-4PCS/KG) 花蟹 (整只)	10KG/CTN	1 KG	41.00
17	CRAB-MUD CLAW MEAT 250GM (WITH HARD CLAW SHELL) (NIKUDO PREMIUM GRADE) 蟹钳肉	40PKTx0.25KG	1 PKT	19.00
18	CRAB-MUD CRAB SHELL WITH STUFFED CRAB MEAT (M) (11.5-12.5CM) (±90GM) 纯蟹肉酿蟹盖	11.5-12.5CM; ±85GM	1 PC	17.00
19	CRAB-MUD CRAB SHELL WITH STUFFED CRAB MEAT (L) (12.5-13.5CM) (±100GM) 纯蟹肉酿蟹盖	12.5-12.5CM; ±85GM	1 PC	19.00
20	CRAB-EGG ROE (NIKUDO) (100GM X 100PKT) 螃蟹蛋 (蟹膏)	0.1KG/PKT;100PKT/CTN	1 PKT	13.00
21	CRAB-MUD CRAB EGG (RAW)(CRAB ROE) (500GMX20PKT) 螃蟹蛋 (蟹膏)	500GMX20PKT	1 PKT	61.00

NO	DESCRIPTION	PACKING	QTY	AMOUNT (RM)
B	SQUID/CUTTLEFISH/OCTOPUS SERIES 鱿鱼/墨鱼/八爪鱼	   		
1	CEPHALOPOD-SQUID INDIAN EGG (ROE) (PINK)(1KG X10PKT) 印度鱿鱼蛋	1KG/BLK, 10BL K/CTN	1 KG	14.00
2	CEPHALOPOD-CUTTLEFISH EGG (ROE) (NET: 250GM X 25PKT)(GW: 500GM/PKT) 墨鱼蛋	1KG/BLK, 10BLK/CTN	1 KG	44.00
3	CEPHALOPOD-CUTTLEFISH EGG (ROE) (1KG X 10PKT;Net:0.9KG) 墨鱼蛋	Net: 250GM X 25PKT;	1 KG	40.00
4	CEPHALOPOD-SQUID TUBE IQF U/5 (1KG X 10PKT; NET:35%) 鱿鱼筒	GW:500GM/PKT	1 KG	13.00
5	CEPHALOPOD-SQUID FLOWER (1KG X 10PKT; NET:35%) 苏东花	1KG/PKT;7PKT/CTN, NET:0.9KG/PKT	1 KG	12.00
6	CEPHALOPOD-SQUID RING (1KG X 10PKT; NET:35%) 苏东圈	1KG/PKT,10PKT/CTN; NET: 35%	1 KG	13.00
7	CEPHALOPOD-SQUID WHOLE ROUND 4"/6" (10-20PC) (INDIA/PAKISTAN)(2KG X 6BLOCK; NET:1.1KG)	1KG/PKT,10PKT/CTN; NET:35%	1 KG	22.00
8	CEPHALOPOD-SQUID WHOLE ROUND 6"/8" (6-10PC) (INDIA/PAKISTAN)(2KG X 6BLOCK; NET:1.1KG)	1KG/PKT,10PKT/CTN; Net: 35%	1 KG	29.00
9	CEPHALOPOD-SQUID WHOLE ROUND 8"/10" (3-6PC) (INDIA/PAKISTAN)(2KG X 6BLOCK; NET:1.1KG)	2KG/BLK,6BLK/CTN, NET WEIGHT 1.2KG	1 KG	33.00
10	CEPHALOPOD-SQUID HEAD WHOLE CLEAN 40/60 (500GMX 20PKT)	6BLKX2KG, NET WEIGHT 1.2KG	1 PKT	13.00
11	CEPHALOPOD-SQUID WHOLE CLEAN 4"/6" (AA) (1KG X 20PKT)(NET0.5-0.6KG) 鱿鱼 (净)	2KG/BLK,6BLK/CTN, NET WEIGHT 1.2KG	1 PKT	32.00
12	CEPHALOPOD-SQUID WHOLE CLEAN 6"/8" (AA) (1KG X 20PKT)(NET:0.5-0.6KG) 鱿鱼 (净)	500GM/PKT,20 PKT/CTN	1 PKT	34.00
13	CEPHALOPOD-SQUID WHOLE CLEAN 1"/2" (VP) (NIKUDO) (20PKTX0.5KG) 鱿鱼 (净)	20PKTx1KG, NET600GM	1 PKT	13.00
14	CEPHALOPOD-SQUID WHOLE CLEAN 2"/4" (VP) (NIKUDO) (20PKTX0.5KG) 鱿鱼 (净)	20PKT/CTN	1 PKT	17.00
15	CEPHALOPOD-SQUID WHOLE ROUND IQF 8"/10" (20-25cm) (Loligo Squid) (Indonesia Premium)印尼特选大鱿鱼(原只)	500GM/PKT, 20PKT/CTN	1 KG	54.00
16	CEPHALOPOD-SQUID WHOLE ROUND IQF 10"/12" (25-30cm) (Loligo Squid) (Indonesia Premium)印尼特选大鱿鱼(原只)	20PKT/CTN, 500G/PKT	1 KG	54.00
17	CEPHALOPOD-SQUID WHOLE ROUND IQF 12"/UP (30cm) (Loligo Squid) (Indonesia Premium) 印尼特选大鱿鱼(原只)	10KG/CTN; NO GLAZING	1 KG	54.00
18	CEPHALOPOD - BOILED SQUID TENTACLES (SQUID LEG) (1KGX10PKT; 30% GLAZING)	10KG/CTN; NO GLAZING	1 KG	22.00
19	CEPHALOPOD - GIANT SQUID FILLET (BLOCK FROZEN) (10KG X 2BLOCK) 大王鱿鱼肉	10KG/CTN; NO GLAZING	1 KG	20.00
20	CEPHALOPOD-SQUID ILLEX WR 300/400 (Running Weight) (12KG-16KG/CTN)(SEMI IQF) 船冻-阿根廷鱿鱼 (日式烧烤)	1KG X 10PKT; 30% GLAZING	1 KG	36.00
21	SQUID WET(ARGENTINA) IQF 300/500GM/PC (SOTONG KEMBANG/SOAKED SQUID)(15KG/CTN) 发水鱿鱼		1 KG	42.00

NO	DESCRIPTION	PACKING	QTY	AMOUNT (RM)
22	CEPHALOPOD-OCTOPUS WC CUT (LONG LEG) (VP)(NIKUDO)(20PKTX0.5KG) 长脚八爪鱼 (净-切)	500G/PKT, 20PKT/CTN	1 PKT	21.00
23	CEPHALOPOD-OCTOPUS BABY WHOLE CLEAN 10/20 (20PKTX0.5KG)(VT) 八爪鱼 (净)	BLOKFROZEN; 20PKT X 0.5KG; NET:0.45KG	1 PKT	23.00
24	CEPHALOPOD-OCTOPUS BABY WHOLE CLEAN 20/40 (20PKTX0.5KG)(VT) 八爪鱼 (净)	BLOKFROZEN; 20PKT X 0.5KG; NET:0.45KG	1 PKT	23.00
25	CEPHALOPOD-OCTOPUS BABY WHOLE CLEAN 40/60 (20PKTX0.5KG)(VT) 八爪鱼 (净)	BLOKFROZEN; 20PKT X 0.5KG; NET:0.45KG	1 PKT	25.00
26	CEPHALOPOD-OCTOPUS BABY WHOLE CLEAN 60/80 (20PKTX0.5KG)(VT) 八爪鱼 (净)	BLOK FROZEN; 20PKT X 0.5KG; NET:0.45KG	1 PKT	25.00
27	OCTOPUS COOKED CHOP CUT IQF(GIANT OCTOPUS)(800GM X 8PKT)熟章鱼-八爪鱼 (切粒)	IQF; 800GM X 8PKT	1 PKT	31.00
28	GIANT OCTOPUS LONG LEG WHOLE CLEAN IQF (10KG) (POR SPECIAL PRODUCT) 大长腿章鱼-八爪鱼 (净)	IQF 10KG/CTN	1 KG	48.00
29	CEPHALOPOD-BABY CUTTLEFISH WHOLE CLEAN IQF 10/20 PCS/KG (1KG X 10PKT; 20% GLAZING) 沙巴墨鱼仔 (净)	1KG/PKT, 10PKT/CTN	1 KG	36.00
30	CEPHALOPOD-BABY CUTTLEFISH WHOLE CLEAN IQF 20/40 PCS/KG (1KG X 10PKT; 20% GLAZING) 沙巴墨鱼仔 (净)	1KG/PKT, 10PKT/CTN	1 KG	36.00
31	CEPHALOPOD-BABY CUTTLEFISH WHOLE CLEAN IQF 40/60 PCS/KG (1KG X 10PKT; 20% GLAZING) 沙巴墨鱼仔 (净)	1KG/PKT, 10PKT/CTN	1 KG	36.00
32	CEPHALOPOD-BABY CUTTLEFISH WHOLE CLEAN IQF 60/80 PCS/KG (1KG X 10PKT; 20% GLAZING) 沙巴墨鱼仔 (净)	1KG/PKT, 10PKT/CTN	1 KG	36.00
33	CEPHALOPOD-BABY CUTTLEFISH WHOLE CLEAN IQF 80/UP PCS/KG (1KG X 10PKT; 20% GLAZING) 沙巴墨鱼仔 (净)	1KG/PKT, 10PKT/CTN	1 KG	36.00
34	CEPHALOPOD-BABY CUTTLEFISH WHOLE CLEAN IQF (SMALL 100/UP) (1KG X 10PKT; 20% GLAZING) 沙巴墨鱼仔 (净)	1KG/PKT, 10PKT/CTN	1 KG	36.00
35	CEPHALOPOD-CUTTLEFISH WHOLE CLEAN 100/200 GM/PC (VP)(NIKUDO) 沙巴特选-墨斗 (净)	IQF;10KG/CTN; NIKUDO VP	1 KG	52.00
36	CEPHALOPOD-CUTTLEFISH WHOLE CLEAN 200/300 GM/PC (VP)(NIKUDO) 沙巴特选-墨斗 (净)	IQF;10KG/CTN; NIKUDO VP	1 KG	52.00
37	CEPHALOPOD-CUTTLEFISH WHOLE CLEAN 300/400 GM/PC (VP)(NIKUDO) 沙巴特选-墨斗 (净)	IQF;10KG/CTN; NIKUDO VP	1 KG	52.00
38	CEPHALOPOD-CUTTLEFISH WHOLE CLEAN 400/500 GM/PC (VP)(NIKUDO) 沙巴特选-墨斗 (净)	IQF;10KG/CTN; NIKUDO VP	1 KG	52.00
39	CEPHALOPOD-CUTTLEFISH WHOLE CLEAN 500/600 GM/PC (VP)(NIKUDO) 沙巴特选-墨斗 (净)	IQF;10KG/CTN; NIKUDO VP	1 KG	52.00
40	CEPHALOPOD-CUTTLEFISH WHOLE CLEAN 600/700 GM/PC (VP)(NIKUDO) 沙巴特选-墨斗 (净)	IQF;10KG/CTN; NIKUDO VP	1 KG	52.00

NO	DESCRIPTION	PACKING	QTY	AMOUNT (RM)
C	SEA SHELL PRODUCT 贝类(带子/青蚝/蓝蚝/生蚝/竹灘/血蚶/毛蚶/八爪螺肉/鲜贝):	   		
1	ABALONE SLICED (KWAI FEI ABALONE) 贵妃鲍片 (300GMX 40PKT)	300GM/PKT; 40PKT/CTN	1 PKT	8.00
2	CRUSTACEAN-ABALONE HALF SHELL(WHOLE CLEAN) (SASHIMI GRADE)(M) (20PKTX10PCS/CTN)半壳鲍鱼(净)	±16G/PC, 5.0-5.5CM; NET 160G, GROSS 270G	1 PKT	44.00
3	CRUSTACEAN-ABALONE HALF SHELL (WHOLE CLEAN) (SASHIMI GRADE)(L) (20PKTX8PCS/CTN), 半壳鲍鱼(净)	±25G/PC, 6- 7CM; NET 200G, GROSS 340G	1 PKT	54.00
4	CRUSTACEAN-ABALONE HALF SHELL (WHOLE CLEAN) (SASHIMI GRADE),(XXL)(50PKTX2PCS/CTN) 半壳鲍鱼(净)	±36G/PC, 7.5CM-8.5CM/PC	1 PKT	23.00
5	CRUSTACEAN-SCALLOP IQF 7/10PCS/LB (JAPAN) (16/20PCS/KG)(2L)(SASHIMI GRADE)日本北海道带子肉-生食级	1KG x 10PKT; 10KG/CTN	1 KG	412.00
6	CRUSTACEAN-SCALLOP IQF 10/12PCS/LB (JAPAN) (21/25PCS/KG) (L) (SASHIMI GRADE) 日本北海道带子肉-生食级	1KGx 10PKT; 10KG/CTN	1 KG	304.00
7	CRUSTACEAN-SCALLOP HALF SHELL IQF (PINK SHELL) 5-7CM (31/40PCS/PKT)半壳日月贝带子	500GM/PKT; 20 PKT/CTN; 20% GLAZING	1 PKT	23.00
8	CRUSTACEAN-SCALLOP HALF SHELL IQF 5-7CM (S) (JAPANESE SCALLOP)(10/15PCS/PKT)(500G)半壳日式带子(扇贝)	0.5KG/PKT, 20PKT/CTN	1 PKT	17.00
9	CRUSTACEAN-SCALLOP HALF SHELL IQF 8-9CM (XL, 10-12PCS/KG)(1KG) 半壳日式带子(扇贝)	1KG/PKT, 10PKT/CTN	1 KG	39.00
10	CRUSTACEAN-SCALLOP HALF SHELL IQF 9-10CM (XXL, 9PCS/KG)(1KG) 半壳日式带子(扇贝)	1KG/PKT, 10PKT/CTN	1 KG	39.00
11	CRUSTACEAN-SCALLOP HALF SHELL IQF 12-14CM (SUPER XL, 2PCS/PKT) 半壳日式带子(扇贝) (特大)	2PCS/PKT; 30PKT/CTN; PLAIN BAG	1 PKT	22.00
12	CRUSTACEAN-SCALLOP CANADA IQF 8/12 PCS/LB (454GM) (NIKUDO)(VP)(±9-11PCS/PKT) 加拿大带子肉	454GM X 20PKT; 10% GLAZING;	1 PKT	80.00
13	CRUSTACEAN-SCALLOP CANADA IQF 10/20 PCS/LB (454GM) (NIKUDO)(VP)(±13-15PCS/PKT) 加拿大带子肉	454GM X 20PKT; 10% GLAZING;	1 PKT	74.00
14	CRUSTACEAN-SCALLOP CANADA IQF 20/30 PCS/LB (454GM) (NIKUDO)(VP)(±19-23PCS/PKT) 加拿大带子肉	454GM X 20PKT; 10% GLAZING;	1 PKT	74.00
15	CRUSTACEAN-SCALLOP IQF 40/60 PCS/LB (250GM/PKT) (NIKUDO)(VP)(±22-27PCS/PKT) 海湾贝(原汁-无泡药)	250GM X 40PKT; 20% GLAZING	1 PKT	18.00
16	CRUSTACEAN-SCALLOP COOKED IQF 100/150 PCS/KG (JAPANESE) (1KG*10PKT) 日式熟带子肉	10KG/CTN	1 KG	41.00
17	CRUSTACEAN-SCALLOP COMBINATION IQF 40/60 (10- 11PCS/PKT) (200GM/PKT) 组合带子肉	200GM/PKT; 40PKT/CTN; 10% GLAZING	1 PKT	17.00
18	CRUSTACEAN-SCALLOP IQF 80/100 (180-220 PCS/PKT)(1KG) (100% NET) 海湾贝带子肉 (原汁)	1KG X 10PKT; NO GLAZING	1 PKT	75.00
19	CRUSTACEAN-COCKLE HALF SHELL(HALF SHELL CLAM MEAT) (BLOOD CLAM) (PREMIUM GRADE)(NIKUDO VP) 半壳血蚶	500GM/PKT 20PKT/CTN; 10% GLAZING; VP	1 PKT	18.00
20	CRUSTACEAN-COCKLE MEAT (BLOOD CLAM) (CLAM MEAT)(PREMIUM GRADE)(VP) 血蚶肉	500GM/PKT, 20 PKT/CTN; VP	1 PKT	19.00
21	CRUSTACEAN-COCKLE MEAT (FUR CLAM-KERANG BULU) 300/500 PCS/LB (500GM X 20PKT;20% GLAZING) 毛蚶肉	500G/PKT, 20PKT/CTN; 20 % GLAZING	1 PKT	15.00

NO	DESCRIPTION	PACKING	QTY	AMOUNT (RM)
22	CRUSTACEAN-MUSSEL MEAT 200/300 (500GM X 20PKT; 50% GLAZING) 蓝贝肉(蓝青口肉/紫贻贝肉)	500GM X 20PKT; 200/300	1 PKT	10.00
23	CRUSTACEAN-MUSSEL BLUE FULL SHELL (CHINA) (907GM X 10PKT) 全壳蓝贝(蓝青口/紫贻贝)	907GM X 10PKT; 20% GLAZING	1 PKT	13.00
24	CRUSTACEAN-MUSSEL GREEN HALF SHELL (NEW ZEALAND) (M SIZE)(1KG/PKT,10PKT/CTN)新西兰半壳青蚝	1KG/PKT; 10PKT/CTN	1 PKT	61.00
25	CRUSTACEAN-CLAM HARD FULL SHELL (MERETRIX LUSORIA) 21/25 (500GM) (BIG LALA) 全壳文蛤	500GM/PKT,20 PKT/CTN	1 PKT	17.00
26	CLAM ORIENT FULL SHELL (HAMAGURI CLAM) 30/40 PCS/LB (PREMIUM GRADE)(500GM*20PKT) 全壳花帘蛤-特级	20PKTX500G	1 PKT	11.00
27	CRUSTACEAN-CLAM ASARI FULL SHELL (HAMAGURI CLAM) 31/35 (30/40) (500GMx20PKT) 杂色蛤蜊	500GM/PKT; 20PKT/CTN, 40% GLAZING	1 PKT	7.00
28	CRUSTACEAN-CLAM MEAT (LALA) (LITTLENECK CLAM) PREMIUM 300/500 (500GM; 10% Glazing) 啦啦肉(原汁)	500GM/PKT, 20 PKT/CTN, 10% GLAZING	1 PKT	16.00
29	CRUSTACEAN-CLAM FULL SHELL(FLOWER LALA) (KERANG BATIK)(100/120)(1KG) 油蛤-花蛤拉拉	1KGX10PKT	1 KG	9.00
30	CRUSTACEAN-COMMON SPIDER CONCH MEAT (SABAH SPECIAL) (500GM*20PKT) 八爪螺肉	500G/PKT, 20PKT/CTN	1 PKT	20.00
31	CRUSTACEAN-CLAM PURPLE WASHINGTON FULL SHELL 5/8 CM/PC (9/11PCS/PKT) 紫石房蛤(全壳)	1KG/PKT; 10PKT/CTN; 10% Glazing	1 KG	27.00
32	CRUSTACEAN-CLAM PACIFIC RAZOR FULL SHELL 31/40 (500GM) 指甲滩	500GM/PKT; 20PKT/CTN	1 PKT	19.00
33	CRUSTACEAN-CLAM PACIFIC RAZOR FULL SHELL 60/80 (500GM) 指甲滩	500GM/PKT; 20PKT/CTN	1 PKT	15.00
34	CRUSTACEAN-CLAM BAMBOO LARGE 8/10 CM (1KG X 10PKT) 竹滩	1KG/PKT; 10PKT/CTN	1 KG	11.00
35	CRUSTACEAN-CLAM TOP SHELL 40/60 PCS/KG (2KG X6PKT) 顶螺/风螺	2KG/PKT 6PKT/CTN	1 KG	30.00
36	CRUSTACEAN-HOKKIGAI CLAM (ARCTIC SURF CLAMS) (M SIZE)(IQF;1KGX10PKT)(SASHIMI GRADE) 北极贝	IQF; 1KG X 10PKT; 25-35 PCS/KG	1 KG	189.00
37	CRUSTACEAN-CANADA NORTHERN PROPELLER CLAM MEAT (SASHIMI GRADE)(23-30PCS/PKT) 冰山贝 (生食级)	200GM/PKT; 40PKT/CTN	1 PKT	14.00
38	SEA URCHINS (UNI)(JAPAN)(AIRFLOWN PREMIUM GRADE) (SASHIMI GRADE)(250GM/TRAY)特级海胆 (空运生食专用)	100GMx70 TRAY/CTN	1 PKT	270.00
39	CRUSTACEAN-OYSTER FULL SHELL SASHIMI XXL SIZE 16/20CM (36PCS/CTN) 全壳生蚝(特大)	3DOZEN,16/18 CM	1 PC	9.00
40	CRUSTACEAN-OYSTER FULL SHELL SASHIMI L SIZE 8/12CM (10DOZENS / 120PCS/CTN) 全壳生蚝	10DOZEN; 120PCS/CTN	1 PC	3.00
41	CRUSTACEAN-OYSTER HALF SHELL (L SIZE)(10-12CM) (10 DOZENS; 120PCS/CTN) 半壳生蚝	120PCS/PKT, 10 DOZEN/CTN	1 PC	3.00
42	CRUSTACEAN-OYSTER MEAT XXL 16/18 GM (1KG*10PKT; 30% GLAZING) (KOREA) 生蚝肉-特大	1KG/PKT; 10PKT/CTN	1 KG	52.00
43	CRUSTACEAN-OYSTER MEAT L-4/8 CM (1KG*10PKT ; 45% Glazing) 生蚝肉	1KG/PKT; 10PKT/CTN	1 KG	25.00
44	CRUSTACEAN-OYSTER MEAT XL-9/12 GM (1KG*10PKT ; 45% Glazing) 生蚝肉	1KG/PKT; 10PKT/CTN	1 KG	25.00

NO	DESCRIPTION	PACKING	QTY	AMOUNT (RM)
D	Prawn Category 虾类: 龙虾/生虾(大头虾)/海虎虾/花虎虾/黑虎虾(草虾)/猫虎虾(花虾)/海明虾(海白虾)/沙罗虾/麻虾(黄虾)/南美白虾/琵琶虾(虾婆)/濑尿虾(虾姑)/虾壳			
1	PRAWN-LOBSTER BOSTON COOKED IQF 350/400 GM/PC (10LB; 4.54KG/CTN) 波士顿龙虾(熟)	IQF 4.54KG/CTN	1 KG	160.00
2	PRAWN-LOBSTER IQF 300/400 GM/PC (ROCK LOBSTER) 龙虾-小蜜蜂龙虾	10KG/CTN	1 KG	187.00
3	PRAWN-LOBSTER IQF 400/500 GM/PC (ROCK LOBSTER) 龙虾-小蜜蜂龙虾	10KG/CTN	1 KG	187.00
4	PRAWN-LOBSTER IQF 500/600 GM/PC (ROCK LOBSTER) 龙虾-小蜜蜂龙虾	IQF 10KG/CTN	1 KG	187.00
5	PRAWN-LOBSTER IQF 600/700 GM/PC (ROCK LOBSTER) 龙虾-小蜜蜂龙虾	IQF 10KG/CTN	1 KG	187.00
6	PRAWN-LOBSTER IQF 800/1000 GM/PC (ROCK LOBSTER) 龙虾-小蜜蜂龙虾	IQF 10KG/CTN	1 KG	187.00
7	PRAWN-FRESH WATER PRAWN (SCAMPI) HEAD ON IQF U/2 PCS/KG (10KG/CTN; 20% Glazing) 生虾/大头虾/罗氏沼虾	IQF; 10KG/CTN	1 KG	115.00
8	PRAWN-FRESH WATER PRAWN (SCAMPI) HEAD ON IQF U/3 PCS/KG (10KG/CTN; 20% Glazing) 生虾/大头虾/罗氏沼虾	IQF; 10KG/CTN	1 KG	100.00
9	PRAWN-FRESH WATER PRAWN (SCAMPI) HEAD ON IQF U/5 PCS/KG (10KG/CTN; 20% Glazing) 生虾/大头虾/罗氏沼虾	IQF; 10KG/CTN	1 KG	86.00
10	PRAWN-FRESH WATER PRAWN (SCAMPI) HEAD ON IQF U/7 PCS/KG (10KG/CTN; 20% Glazing) 生虾/大头虾/罗氏沼虾	IQF; 10KG/CTN; 8/12 CM/PC	1 KG	72.00
11	PRAWN-FRESH WATER PRAWN (SCAMPI) HEAD ON IQF U/10 PCS/KG (10KG/CTN; 20% Glazing) 生虾/大头虾/罗氏沼虾	IQF; 10KG/CTN	1 KG	63.00
12	PRAWN-FRESH WATER PRAWN (SCAMPI) HEAD ON IQF U/15 PCS/KG (10KG/CTN; 20% Glazing) 生虾/大头虾/罗氏沼虾	IQF; 10KG/CTN	1 KG	57.00
13	PRAWN-FRESH WATER PRAWN (SCAMPI) HEAD ON IQF 16/20 PCS/KG (10KG/CTN; 20% Glazing) 生虾/大头虾/罗氏沼虾	IQF; 10KG/CTN	1 KG	52.00
14	PRAWN-SEA WHITE PRAWN HEAD ON 10/15 PCS/KG (8- 10PCS) (NET: 700GM*10BLK) 海明虾(海白虾)	700G/BLK, 10BLK/CTN	1 BLK	73.00
15	PRAWN-SEA WHITE PRAWN HEAD ON 16/20 PCS/KG (11- 14PCS) (NET: 700GM*10BLK) 海明虾(海白虾)	700G/BLK, 10BLK/CTN	1 BLK	67.00
16	PRAWN-SEA WHITE PRAWN HEAD ON 21/25 PCS/KG (15- 18PCS) (NET: 700GM*10BLK) 海明虾(海白虾)	700G/BLK, 10BLK/CTN	1 BLK	60.00
17	PRAWN-SEA WHITE PRAWN HEAD ON 26/30 PCS/KG (19- 21PCS) (NET: 700GM*10BLK) 海明虾(海白虾)	700G/BLK, 10BLK/CTN	1 BLK	57.00
18	PRAWN-SEA WHITE PRAWN HEAD ON 31/35 PCS/KG (22- 24PCS) (NET: 700GM*10BLK) 海明虾(海白虾)	700G/BLK, 10BLK/CTN	1 BLK	49.00
19	PRAWN-SEA WHITE PRAWN HEAD ON 31/40 PCS/KG (25- 28PCS) (NET: 700GM*10BLK) 海明虾(海白虾)	700G/BLK, 10BLK/CTN	1 BLK	45.00
20	PRAWN-SEA WHITE PRAWN HEAD ON 41/50 PCS/KG (29- 35PCS) (NET: 700GM*10BLK) 海明虾(海白虾)	700G/BLK, 10BLK/CTN	1 BLK	37.00

NO	DESCRIPTION	PACKING	QTY	AMOUNT (RM)
21	PRAWN-SEA WHITE PRAWN HEAD ON 51/60 PCS/KG (43- 49PCS) (NET: 700GM*10BLK) 海明虾 (海白虾)	700G/BLK, 10BLK/CTN	1 BLK	35.00
22	PRAWN-SEA WHITE PRAWN HEAD ON 10/15 PCS/KG (5-6PCS) (500GM*20PKT; NW:450GM/PKT)(VP) 海明虾 (海白虾)	20PKT/CTN, 500G/PKT	1 PKT	53.00
23	PRAWN-SEA WHITE PRAWN HEAD ON 16/20 PCS/KG (8-9PCS) (500GM*20PKT; NW:450GM/PKT)(VP) 海明虾 (海白虾)	500G/PKT, 20PKT/CTN	1 PKT	48.00
24	PRAWN-SEA WHITE PRAWN HEAD ON 21/25 PCS/KG (10-11PCS) (500GM*20PKT; NW:450GM/PKT)(VP) 海明虾 (海白虾)	500G/PKT, 20PKT/CTN	1 PKT	44.00
25	PRAWN-SEA WHITE PRAWN HEAD ON 26/30 PCS/KG (12-13PCS) (500GM*20PKT; NW:450GM/PKT)(VP) 海明虾 (海白虾)	500G/PKT, 20PKT/CTN	1 PKT	41.00
26	PRAWN-SEA WHITE PRAWN HEAD ON 31/35 PCS/KG (14-15PCS) (500GM*20PKT; NW:450GM/PKT)(VP) 海明虾 (海白虾)	20PKT/CTN, 500G/PKT	1 PKT	36.00
27	PRAWN-SEA WHITE PRAWN HEAD ON 31/40 PCS/KG (16-18PCS) (500GM*20PKT; NW:450GM/PKT)(VP) 海明虾 (海白虾)	500G/PKT, 20PKT/CTN	1 PKT	34.00
28	PRAWN-SEA WHITE PRAWN HEAD ON 41/50 PCS/KG (19-22PCS) (500GM*20PKT; NW:450GM/PKT)(VP) 海明虾 (海白虾)	500G/PKT, 20PKT/CTN	1 PKT	29.00
29	PRAWN-SEA WHITE PRAWN HEAD ON 51/60 PCS/KG (23-27PCS) (500GM*20PKT; NW:450GM/PKT)(VP)海明虾 (海白虾)	20PKT/CTN, 500G/PKT	1 PKT	27.00
30	PRAWN-SEA WHITE PRAWN MEAT PD 13/15 PCS/LG (1KG X 10PKT; 100% NET)(VP) 海明虾肉 (海白虾肉)	1KG/PKT, 10PKT/CTN	1 KG	106.00
31	PRAWN-SEA WHITE PRAWN MEAT PD 16/20 PCS/LG (1KG X 10PKT; 100% NET)(VP) 海明虾肉 (海白虾肉)	1KG/PKT, 10PKT/CTN	1 KG	106.00
32	PRAWN-TIGER SEA HEAD ON 2/4 PCS/KG IQF (VP) (NIKUDO)(10KG) 野生海虎虾	IQF; 10KG/CTN; 100% NET	1 KG	214.00
33	PRAWN-TIGER SEA HEAD ON 4/6 PCS/KG (VP)(NIKUDO) (10PKTX1KG)(±4-5PCS) 野生海虎虾	1KG X 10PKT; NET:0.9KG	1 BLK	162.00
34	PRAWN-TIGER SEA HEAD ON 6/8 (VP)(NIKUDO) (20PKTX0.5KG)(3PCS)野生海虎虾	500G/PKT, 20PKT/CTN; NET:0.45KG	1 PKT	76.00
35	PRAWN-TIGER SEA HEAD ON 8/10 (VP)(NIKUDO) (20PKTX0.5KG)(4PCS) 野生海虎虾	500G/PKT, 20PKT/CTN;	1 PKT	72.00
36	PRAWN-TIGER SEA HEAD ON 10/12 (VP)(NIKUDO) (20PKTX0.5KG) (5PCS)野生海虎虾	500G/PKT, 20PKT/CTN; NET:0.45KG	1 PKT	67.00
38	PRAWN-TIGER SEA HEAD ON 16/20 (VP)(NIKUDO) (20PKTX0.5KG)(±8-9PCS) 野生海虎虾	500G/PKT, 20PKT/CTN; NET:0.45KG	1 PKT	50.00
39	PRAWN-TIGER SEA HEAD ON 21/25 (VP)(NIKUDO) (20PKTX0.5KG)(±10-11PCS) 野生海虎虾	500G/PKT, 20PKT/CTN; NET:0.45KG	1 PKT	46.00
40	PRAWN-TIGER SEA HEADLESS 6/8 (3PCS)(0.3KG) (VP)(NIKUDO) 野生海老虎虾 (去头虾)	300GX20PKT; NIKUDO VP	1 PKT	33.00
41	PRAWN-TIGER SEA HEADLESS 8/10 (4PCS)(0.3KG) (VP)(NIKUDO) 野生海老虎虾 (去头虾)	300GX20PKT; NIKUDO VP	1 PKT	29.00
42	PRAWN-TIGER SEA HEADLESS 10/12 (5PCS)(0.3KG) (VP)(NIKUDO) 野生海老虎虾 (去头虾)	300GX20PKT; NIKUDO VP	1 PKT	26.00
43	PRAWN-TIGER SEA HEADLESS 13/15 (6PCS)(0.3KG) (VP)(NIKUDO) 野生海老虎虾 (去头虾)	300GX20PKT; NIKUDO VP	1 PKT	25.00
44	PRAWN-TIGER SEA HEADLESS 16/20 (8-9PCS)(0.3KG)(VP)(NIKUDO) 野生海老虎虾 (去头虾)	300GX20PKT; NIKUDO VP NET:0.45KG	1 PKT	23.00

NO	DESCRIPTION	PACKING	QTY	AMOUNT (RM)
45	PRAWN-TIGER BLACK HEAD ON 13/15PCS/KG (9/12PCS/BLK)(NET:700GMx10BLK) 黑虎虾/草虾(带头虾)	BLOCK FROZEN; NET:700G X 10BLOCK	1 BLK	63.00
46	PRAWN-TIGER BLACK PRAWN HEAD ON 16/20 PCS/KG (13/15 PCS/BLK)(NET:700GMx10BLK) 黑虎虾/草虾(带头虾)	SEMI BLOCK; NET:700G X 10BLOCK	1 BLK	51.00
47	PRAWN-TIGER BLACK HEAD ON 21/25 PCS/KG (15-17PCS/BLK)(NET:700GMx10BLK) 黑虎虾/草虾(带头虾)	SEMI BLOCK; NET:700G X 10BLOCK	1 BLK	46.00
48	PRAWN-TIGER BLACK HEAD ON 26/30 PCS/KG (16/20PCS/BLK)(NET:700GMx10BLK) 黑虎虾/草虾(带头虾)	SEMI BLOCK; NET:700G X10BLOCK	1 BLK	42.00
49	PRAWN-TIGER BLACK HEAD ON 31/35 PCS/KG (21/25PCS/BLK)(NET:700GMx10BLK) 黑虎虾/草虾(带头虾)	SEMI BLOCK; NET:700G X 10BLOCK	1 BLK	38.00
50	PRAWN-TIGER BLACK HEAD ON 31/40 PCS/KG (26/30PCS/BLK)(NET:700GMx10BLK) 黑虎虾/草虾(带头虾)	SEMI BLOCK; NET:700G X 10BLOCK	1 BLK	34.00
51	PRAWN-TIGER BLACK HEAD ON 41/50 PCS/KG (31/35PCS/BLK)(NET:700GMx10BLK) 黑虎虾/草虾(带头虾)	SEMI BLOCK; NET:700G x 10BLOCK	1 BLK	31.00
52	PRAWN-TIGER BLACK HEAD ON 10/12 PCS/KG (±5PCS) (VP)(NIKUDO)(20PKTX0.5KG) 黑虎虾/草虾(带头虾)	20PKTX0.5KG; NET:0.45KG	1 PKT	48.00
53	PRAWN-TIGER BLACK HEAD ON 13/15 PCS/KG (±6PCS) (VP)(NIKUDO)(20PKTX0.5KG) 黑虎虾/草虾(带头虾)	20PKTX0.5KG; NET:0.45KG	1 PKT	44.00
54	PRAWN-TIGER BLACK HEAD ON 16/20 PCS/KG (±8-9PCS) (VP)(NIKUDO)(20PKTX0.5KG) 黑虎虾/草虾(带头虾)	20PKT/CTN,500G/ PKT; NET:0.45KG	1 PKT	40.00
55	PRAWN-TIGER BLACK HEAD ON 21/25 PCS/KG (±10-11PCS)(VP)(NIKUDO)(20PKTX0.5KG)黑虎虾/草虾(带头虾)	20PKT/CTN,500G/ PKT; NET:0.45KG	1 PKT	36.00
56	PRAWN-TIGER BLACK HEAD ON 26/30 PCS/KG (±12-13PCS) (VP)(NIKUDO)(20PKTX0.5KG) 黑虎虾/草虾(带头虾)	20PKT/CTN,500G/ PKT; NET:0.45KG	1 PKT	33.00
57	PRAWN-VANNAMEI PRAWN HEAD ON 16/20 PCS/KG (12-14PCS)(NET: 700GM*10BLK)南美白虾 (活冻带头虾)	700G/BLK, 10BLK/CTN	1 BLK	50.00
58	PRAWN-VANNAMEI PRAWN HEAD ON 21/25 PCS/KG (15-17PCS)(NET: 700GM*10BLK)南美白虾 (活冻带头虾)	700G/BLK, 10BLK/CTN	1 BLK	46.00
59	PRAWN-VANNAMEI PRAWN HEAD ON 26/30 PCS/KG (19-21PCS)(NET: 700GM*10BLK)南美白虾 (活冻带头虾)	700G/BLK, 10BLK/CTN	1 BLK	42.00
60	PRAWN-VANNAMEI PRAWN HEAD ON 31/40 PCS/KG (24-28PCS)(NET: 700GM*10BLK) 南美白虾 (活冻带头虾)	700G/BLK,10B LK/CTN	1 BLK	34.00
61	PRAWN-VANNAMEI PRAWN HEAD ON 41/50 PCS/KG (29-35PCS)(NET: 700GM*10BLK) 南美白虾 (活冻带头虾)	700G/BLK,10B LK/CTN	1 BLK	29.00
62	PRAWN-VANNAMEI PRAWN HEAD ON 51/60 PCS/KG (36-42PCS)(NET: 700GM*10BLK) 南美白虾 (活冻带头虾)	700G/BLK,10B LK/CTN	1 BLK	27.00
63	PRAWN-VANNAMEI PRAWN HEAD ON 61/70 PCS/KG (43-49PCS)(NET: 700GM*10BLK)南美白虾 (活冻带头虾)	700G/BLK, 10BLK/CTN	1 BLK	26.00
64	PRAWN-VANNAMEI PRAWN HEAD ON 16/20 PCS/KG (±8-9PCS) (VP)(NIKUDO)(500GM)(LIVE FROZEN) 南美白虾 (活冻带头虾)	0.5KG/PKT, 20PKT/CTN	1 PKT	37.00
65	PRAWN-VANNAMEI PRAWN HEAD ON 21/25 PCS/KG(±10-11PCS) (VP)(NIKUDO)(500GM)(LIVE FROZEN) 南美白虾 (活冻带头虾)	20PKT/CTN, 500G/PKT	1 PKT	33.00
66	PRAWN-VANNAMEI PRAWN HEAD ON 26/30 PCS/KG(±12-13PCS) (VP)(NIKUDO)(500GM)(LIVE FROZEN) 南美白虾 (活冻带头虾)	20PKT/CTN, 500G/PKT	1 PKT	30.00
67	PRAWN-VANNAMEI PRAWN HEAD ON 31/35 PCS/KG(±14-15PCS) (VP)(NIKUDO)(500GM)(LIVE FROZEN) 南美白虾 (活冻带头虾)	500G/PKT, 20PKT/CTN, NET:0.45KG	1 PKT	27.00
68	PRAWN-VANNAMEI PRAWN HEAD ON 31/40 PCS/KG(±16-18PCS) (VP)(NIKUDO)(500GM)(LIVE FROZEN) 南美白虾 (活冻带头虾)	500G/PKT, 20PKT/CTN	1 PKT	25.00

NO	DESCRIPTION	PACKING	QTY	AMOUNT (RM)
69	PRAWN-VANNAMEI PRAWN HEAD ON 41/50 PCS/KG(±19-22PCS) (VP)(NIKUDO)(500GM)(LIVE FROZEN) 南美白虾 (活冻带头虾)	500G/PKT, 20PKT/CTN	1 PKT	22.00
70	PRAWN-VANNAMEI HEAD ON COOKED 31/40 PCS/KG (VP) (NIKUDO)(20PKTX0.5KG) 熟南美白虾 (活冻带头虾)	500G/PKT, 20PKT/CTN	1 PKT	33.00
71	PRAWN-VANNAMEI HEAD ON COOKED 41/50 PCS/KG (VP) (NIKUDO)(20PKTX0.5KG) 熟南美白虾 (活冻带头虾)	500G/PKT, 20PKT/CTN	1 PKT	31.00
72	PRAWN-VANNAMEI HEAD ON COOKED 51/60 PCS/KG (VP) (NIKUDO)(20PKTX0.5KG) 熟南美白虾 (活冻带头虾)	0.5KG/PKT, 20PKT/CTN	1 PKT	30.00
73	PRAWN-VANNAMEI HEAD ON COOKED 26/30 PCS/KG (1KG) (19-21PCS/PKT)(10PKT)(NET:700GM) 熟南美白虾 (活冻带头虾)	1KG/BOX; 10BOX/CTN, NET:0.7KG	1 KG	51.00
74	PRAWN-VANNAMEI HEAD ON COOKED 31/40 PCS/KG (1KG) (25-28 PCS/PKT)(10PKT)(NET:700GM) 熟南美白虾 (活冻带头虾)	1KG/BOX; 10BOX/CTN, NET:0.7KG	1 KG	46.00
75	PRAWN-VANNAMEI HEAD ON COOKED 41/50 PCS/KG 29- 35 PCS/PKT(1KG)(10PKT)(NET:700GM) 熟南美白虾 (活冻带头虾)	1KG/BOX; 10BOX/CTN, NET:0.7KG	1 KG	43.00
76	PRAWN-VANNAMEI COOK MEAT BUTTERFLY CUT 3L (SUSHI EBI) (±170GM)(30PCS/PKT) 熟南美白虾肉(留尾开背)(寿司虾专用)	30PCS/PKT; 40PKT/CTN	1 PKT	19.00
77	PRAWN-VANNAMEI PTOE 21/25 (NOBASHI EBI) (20PCS X 40PKT) 南美白虾 (拉长虾-天妇罗专用)	20PCS/PKT; 40PKT/CTN ; ±420GM	1 PKT	41.00
78	PRAWN-VANNAMEI PTOE 26/30 (NOBASHI EBI) (20PCS X 40PKT) 南美白虾 (拉长虾-天妇罗专用)	20PCS/PKT; 40PKT/CTN ; ±340GM	1 PKT	32.00
79	PRAWN-VANNAMEI PTOE 31/40 (NOBASHI EBI) (20PCS X 40PKT) 南美白虾 (拉长虾-天妇罗专用)	20PCS/PKT; 40PKT/CTN ; ±280GM	1 PKT	25.00
80	PRAWN-VANNAMEI PRAWN MEAT TAIL ON COOKED (CPTO) 51/60 PCS/LB (SEMI IQF) 熟南美白虾肉 (留尾虾仁)	1KG/PKT ; 10PKT/CTN	1 KG	80.00
81	PRAWN-VANNAMEI PRAWN HEAD ON(SOFT SHELL PRAWN) (L)(9-12PCS/PKT)(VP)(NIKUDO) 特选软壳虾(250GM)	L=31/40,41/50 (250GM/PKT; 40PKT/CTN)	1 PKT	17.00
82	PRAWN-VANNAMEI PRAWN HEAD ON (SOFT SHELL PRAWN) (M)(13-17PCS/PKT)(VP)(NIKUDO)特选软壳虾(250GM)	M=51/60,61/70 (250GM/PKT; 40PKT/CTN)	1 PKT	17.00
83	PRAWN-VANNAMEI PRAWN HEAD ON (SOFT SHELL PRAWN) (S)(18-25PCS/PKT)(VP)(NIKUDO) 特选软壳虾(250GM)	S=70/80,80/100 (250G/PKT; 40PKT/CTN)	1 PKT	17.00
84	PRAWN-VANNAMEI PRAWN HEAD NECK SHELL (VP) (NIKUDO) (100GM X 100PKT) 虾颈肉(炸龙须)	100GM/PKT; 100PKT/CTN	1 PKT	3.00
85	PRAWN-VANNAMEI PD 16/20 PCS/LB(500GM x 20PKT; NET:0.45KG)(SABAH PREMIUM)南美白虾肉(沙巴特选)	500G/PKT, 20PKT/CTN	1 PKT	47.00
86	PRAWN-VANNAMEI PD 21/25 PCS/LB (500GM x 20PKT; NET:0.45KG)(SABAH PREMIUM) 南美白虾肉(沙巴特选)	500G/PKT, 20PKT/CTN	1 PKT	43.00
87	PRAWN-VANNAMEI PD 26/30 PCS/LB (500GM x 20PKT; NET:0.45KG)(SABAH PREMIUM) 南美白虾肉(沙巴特选)	500G/PKT, 20PKT/CTN	1 PKT	42.00
88	PRAWN-VANNAMEI PD 31/40 PCS/LB (500GM x 20PKT; NET:0.45KG)(SABAH PREMIUM) 南美白虾肉(沙巴特选)	500G/PKT, 20PKT/CTN	1 PKT	37.00
89	PRAWN-VANNAMEI PD 41/50 PCS/LB (500GM x 20PKT; NET:0.45KG)(SABAH PREMIUM) 南美白虾肉(沙巴特选)	500G/PKT, 20PKT/CTN	1 PKT	34.00
90	PRAWN-VANNAMEI PD 51/60 PCS/LB (500GM x 20PKT; NET:0.45KG)(SABAH PREMIUM) 南美白虾肉(沙巴特选)	500G/PKT, 20PKT/CTN	1 PKT	33.00
91	PRAWN-VANNAMEI PUD 61/70 PCS/LB (500GM x 20PKT; NET:0.45KG)(SABAH PREMIUM) 南美白虾肉(沙巴特选)	500G/PKT, 20PKT/CTN	1 PKT	32.00

NO	DESCRIPTION	PACKING	QTY	AMOUNT (RM)
92	PRAWN-VANNAMEI PUD 71/90 PCS/LB (500GM x 20PKT; NET:0.45KG)(SABAH PREMIUM) 南美白虾肉(沙巴特选)	500G/PKT, 20PKT/CTN	1 PKT	27.00
93	PRAWN-VANNAMEI PUD 91/120 PCS/LB (500GM x 20PKT; NET:0.45KG)(SABAH PREMIUM) 南美白虾肉(沙巴特选)	500G/PKT, 20PKT/CTN	1 PKT	25.00
94	PRAWN-VANNAMEI PUD 100/200 PCS/LB (500GM x 20PKT; NET:0.45KG)(SABAH PREMIUM) 南美白虾肉(沙巴特选)	500G/PKT, 20PKT/CTN	1 PKT	24.00
95	PRAWN-VANNAMEI PD IQF 26/30 PCS/LB (1KG X 10PKT;35% NET) 南美白虾球 (中国-单冻)	1KG/PKT, 10PKT/CTN	1 KG	23.00
96	PRAWN-VANNAMEI PD IQF 31/40 PCS/LB (1KG X 10PKT;35% NET) 南美白虾球 (中国-单冻)	1KG/PKT, 10PKT/CTN	1 KG	20.00
97	PRAWN-VANNAMEI PD IQF 41/50 PCS/LB (1KG X 10PKT;35% NET) 南美白虾球 (中国-单冻)	10PKT X 1KG	1 KG	194.00
98	PRAWN-VANNAMEI PD IQF 51/60 PCS/LB (1KG X 10PKT;35% NET) 南美白虾球 (中国-单冻)	1.0KG/PKT, 10PKT/CTN	1 KG	19.00
99	PRAWN-VANNAMEI PD IQF 61/70 PCS/LB (1KG X 10PKT;35% NET) 南美白虾球 (中国-单冻)	1KG/PKT, 10PKT/CTN	1 KG	18.00
100	PRAWN-VANNAMEI PD IQF 71/90 PCS/LB (1KG X 10PKT;35% NET) 南美白虾球 (中国-单冻)	10 x 1KG	1 KG	18.00
101	PRAWN-VANNAMEI PD IQF 91/120 PCS/LB (1KG X 10PKT;35% NET) 南美白虾球 (中国-单冻)		1 KG	17.00
102	PRAWN-VANNAMEI PD IQF 100/200 PCS/LB (1KG X 10PKT;35% NET) 南美白虾球 (中国-单冻)	1KG/PKT, 10PKT/CTN	1 KG	17.00
103	PRAWN-SEA PINK / YELLOW PRAWN MEAT PTO 61/70 PCS/LB (500GMx20PKT; NET:0.45KG)野生海沙罗虾肉/麻虾肉 (留尾虾仁)	500G/PKT, 20PKT/CTN	1 PKT	33.00
104	PRAWN-SEA PINK / YELLOW PRAWN MEAT PTO 71/90 PCS/LB (500GMx20PKT; NET:0.45KG)野生海沙罗虾肉/麻虾肉 (留尾虾仁)	500G/PKT, 20PKT/CTN	1 PKT	28.00
105	PRAWN-SEA PINK / YELLOW PRAWN MEAT PTO 91/120 PCS/LB (500GMx20PKT; NET:0.45KG)野生海沙罗虾肉/麻虾肉 (留尾虾仁)	500G/PKT, 20PKT/CTN	1 PKT	27.00
106	PRAWN-SEA PINK / YELLOW PRAWN MEAT PD 31/40 PCS/LB (500GMx20PKT; NET:0.45KG)野生海沙罗虾肉/麻虾肉	500G/PKT, 20PKT/CTN	1 PKT	39.00
107	PRAWN-SEA PINK / YELLOW PRAWN MEAT PD 41/50 PCS/LB (500GMx 20PKT; NET:0.45KG)野生海沙罗虾肉/麻虾肉	500G/PKT, 20PKT/CTN	1 PKT	34.00
108	PRAWN-SEA PINK / YELLOW PRAWN MEAT PD 51/60 PCS/LB (500GM X 20PKT; NET:0.45KG)野生海沙罗虾肉/麻虾肉	500G/PKT, 20PKT/CTN	1 PKT	32.00
109	PRAWN-SEA PINK / YELLOW PRAWN MEAT PUD 61/70 PCS/LB (500GM X 20PKT; NET:0.45KG)野生海沙罗虾肉/麻虾肉	500G/PKT, 20PKT/CTN	1 PKT	30.00
110	PRAWN-SEA PINK / YELLOW PRAWN MEAT PUD 71/90 PCS/LB (500GM X 20PKT; NET:0.45KG)野生海沙罗虾肉/麻虾肉	500G/PKT, 20PKT/CTN	1 PKT	27.00
111	PRAWN-SEA PINK / YELLOW PRAWN MEAT PUD 91/120 PCS/LB (500GM X 20PKT; NET:0.45KG)野生海沙罗虾肉/麻虾肉	500G/PKT, 20PKT/CTN	1 PKT	25.00
112	PRAWN-SEA PINK / YELLOW PRAWN MEAT PUD 100/200 PCS/LB (500GM X 20PKT; NET:0.45KG)野生海沙罗虾肉/麻虾肉	500G/PKT, 20PKT/CTN	1 PKT	24.00
113	PRAWN-SEA PINK / YELLOW PRAWN MEAT PUD 200/300 PCS/LB (500GM X 20PKT; NET:0.45KG)野生海沙罗虾肉/麻虾肉	500G/PKT, 20PKT/CTN	1 PKT	23.00
114	PRAWN-SEA PINK / YELLOW PRAWN MEAT PUD 300/400 PCS/LB (500GM X 20PKT; NET:0.45KG)野生海沙罗虾肉/麻虾肉	500G/PKT, 20PKT/CTN	1 PKT	23.00
115	PRAWN-SEA CAT TIGER PRAWN MEAT PD 51/60 PCS/LB (500GM X 20PKT; NET:0.45KG)野生海猫虎虾肉//花虾肉	500G/PKT, 20PKT/CTN	1 PKT	33.00

NO	DESCRIPTION	PACKING	QTY	AMOUNT (RM)
116	PRAWN-SEA CAT TIGER PRAWN MEAT PD 61/70 PCS/LB (500GM X 20PKT; NET:0.45KG) 野生海猫虎虾肉//花虾肉	500G/PKT, 20PKT/CTN	1 PKT	31.00
117	PRAWN-SEA CAT TIGER PRAWN MEAT PD 71/90 PCS/LB (500GM X 20PKT; NET:0.45KG) 野生海猫虎虾肉//花虾肉	500G/PKT, 20PKT/CTN	1 PKT	25.00
118	PRAWN-SEA CAT TIGER PRAWN MEAT PD 91/120 PCS/LB (500GM X 20PKT; NET:0.45KG) 野生海猫虎虾肉//花虾肉	500G/PKT, 20PKT/CTN	1 PKT	23.00
119	PRAWN-SEA CAT TIGER PRAWN MEAT PD 100/200 PCS/LB (500GM X 20PKT; NET:0.45KG) 野生海猫虎虾肉//花虾肉	500G/PKT, 20PKT/CTN	1 PKT	22.00
E	FISH FILLET 鱼片/鱼肉类: 			
1	FISH-YELLOW TAIL FILLET (HAMACHI FILLET) (JAPAN SASHIMI GRADE) 2/3 KG 日本鰺魚 (生食级)	IQF; VP; ±15KG/CTN	1 KG	200.00
2	FISH-SNAPPER JOHN FILLET (NIKUDO)(VP)(20KG/CTN) (PREMIUM GRADE) 野生红枣鱼肉 (特选)	20KG/CTN	1 KG	92.00
3	FISH-GROUPER RED CORAL FILLET SKIN ON (NIKUDO VP) (PREMIUM GRADE) 野生七星斑鱼肉 (特选)		1 KG	142.00
4	FISH-GROUPER FILLET SKIN ON (PBO)(INDONESIA VP) (PREMIUM GRADE) 野生石斑鱼肉 (带皮)	20KG/CTN	1 KG	92.00
5	FISH-SNAPPER RED FILLET SKIN ON (PBO)(PREMIUM GRADE)(KKM FILLET) 野生红鱼肉 (带皮)	20KG/CTN; Indonesia VP	1 KG	92.00
6	FISH-MACKEREL SABA FILLET SKIN ON (2PCSX30PKT) (300-320GM) (10KG/CTN) 挪威鲭鱼肉 (日式鲭鱼)	2PCSX30PKT;300-320GM;10KG/CTN	1 KG	46.00
7	FISH-SWEET LIPS FILLET SKIN ON(KACI-KACI) (PBO) (PREMIUM GRADE)(INDONESIA VP)胡椒鲷鱼肉 (带皮)	IQF; PLAIN VP; 20KG/CTN	1 KG	52.00
8	FISH-DORY FILLET 300UP (10KG/CTN; 35% GLAZING) 多利鱼肉片 (去骨去皮)	10KG/CTN	1 KG	15.00
9	FISH-CATFISH SILVER FILLET (PATIN FILLET CUT/ PANGA STEAK) (80/120 GM/CUT)(1KG X 10PKT) 巴丁鱼片	IQF VP;45% GLAZING; PURPLE BELT	1 KG	12.00
10	FISH-CATFISH SILVER FILLET (PATIN FILLET) (PANGASIU SLICES)(SKIN ON;PORTION CUT) 30/50GM(500G;10% GLZ)	IQF VP; 500GMX 20PKT; RED BELT	1 PKT	10.00
11	FISH-PERCH SEA FILLET 海鲈鱼肉 (去皮)	6KG/CTN, IQF, 30%GLAZING	1 KG	23.00
12	FISH-SHARK FILLET SKIN OFF U500 鲨鱼肉片(去皮)	6KG/CTN	1 KG	21.00
13	FISH-TILAPIA FILLET 5/7 OZ (SASHIMI GRADE) (TALAPIA) (5KG/CTN; 20% GLAZING) 非洲鱼片 (生吃级) (去皮)	5KG/CTN	1 KG	27.00
14	FISH-TILAPIA FILLET 7/9 OZ (TALAPIA) (10KG/CTN; 45% GLAZING) 非洲鱼片 (去皮)	IQF; 10KG/CTN; 45% GLAZING	1 KG	15.00
15	FISH-TOMAN FILLET (15KG/CTN; 20% GLAZING) 多鳎鱼片 (带皮)	15KG/CTN, IQF	1 KG	42.00
16	FISH-BARRAMUNDI FILLET (SEABASS/SIKAP) 石甲鱼片 (去骨留皮)	10KG/CTN, IQF	1 KG	49.00
17	FISH-PACIFIC COD FILLET (SKIN ON) 300/400GM/PC(VP) 太平洋鳕鱼片	10KG/CTN, GLAZING 10%	1 KG	40.00
18	FISH-PACIFIC COD FILLET (SKIN ON) 400/500GM-PC(VP) 太平洋鳕鱼片	10KG/CTN, GLAZING 10%	1 KG	40.00
19	FISH-MACKEREL SNAKE FILLET 1000UP (BUTTER FISH FILLET)(SHIRO MAGURO)白面鱼片-黄油鱼片	20KG/CTN, IQF, 50% GLAZING	1 KG	36.00

NO	DESCRIPTION	PACKING	QTY	AMOUNT (RM)
20	FISH-TUNA FILLET 500/800 GM (AAA-PREMIUM) (SASHIMI GRADE) (TUNA SAKU) 吞拿鱼肉 (生食级)	IQF,10KG/CTN	1 KG	88.00
21	FISH-HALIBUT GREENLAND FILLET (SKIN ON) (PREMIUM GRADE)(NIKUDO VP)(500GM X 20PKT) 冰岛比目鱼肉片		1 KG	
22	FISH-COD FILLET 1/2KG 鳕鱼肉片	21KG/CTN; 10% GLAZING	1 KG	268.00
23	FISH-COD FISH (SLICED CUT) (±250GM/PKT)(1PCS/PKT) 鳕鱼-切片(10% GLAZING)	10KG/CTN; VP ±250GM/PKT, IQF,	1 PC	64.00
24	FISH-COD FISH (SLICED-CUT) (±500GM/PKT) (2-3PCS/PKT) 鳕鱼-切片(10% GLAZING)	±500GM/PKT; 20PKT/CTN; VP; 10KG/CTN	1 PKT	123.00
25	FISH-UNAGI (JAPANESE EEL) (M) 200GM (50PCS/CTN) 日式鳗鱼烧	25PCS X 2BOX, 5 KG X 2 BOX, IQF, VP	1 KG	113.00
26	FISH-UNAGI (JAPANESE EEL) (L) 250GM (40PCS/CTN) 日式鳗鱼烧	20PCS X 2BOX, 5KG X2 BOX. IQF	1 KG	128.00
27	FISH-UNAGI (JAPANESE EEL) (XL) 350GM (30PCS/CTN) 日式鳗鱼烧	15PCS X 2BOX, 5KG X 2 BOX, IQF	1 KG	115.00
F	FISH MEAT PRODUCTS 鱼肉类:			
1	FISH-HERRING WOLF MEAT (PARANG MEAT)(1KG) (NIKUDO)(VP) 西刀鱼肉	1KG/PKT, 20PKT/CTN	1 KG	26.00
2	FISH-MACKEREL SPANISH MEAT (ISI TENGGIRI) (MIXED GRADE; 1KG) (AA-INDONESIA) 马鲛鱼肉	1KG/PKT, 10PKT/CTN	1 KG	36.00
3	FISH-MACKEREL SPANISH MEAT (ISI TENGGIRI)(1KG) (NIKUDO)(VP)(SABAH PREMIUM GRADE) 马鲛鱼肉 (纯)	1KG/PKT, 20PKT/CTN	1 KG	48.00
4	FISH-INDO-PACIFIC TARPON MEAT (BULAN MEAT)(1KG) (NIKUDO)(VP) 月鱼肉	1KG/PKT, 20PKT/CTN	1 KG	33.00
5	FISH-EEL MEAT (1KG)(NIKUDO VP) 海鳗鱼肉	1KG/PKT, 20PKT/CTN	1 KG	25.00
6	FISH-SHAD SLENDER MEAT (ISI IKAN PUPUT)(1KG) (NIKUDO)(VP) 力鱼肉	1KG X 10PKT/CTN	1 KG	33.00
7	FISH-LAIKO MEAT (ESO SURIMI)	20KG/CTN; 10KG x 2 BLOCKS	1 KG	17.00
8	FISH-ITOYORI MEAT (ITOYORI SURIMI)	20KG/CTN; 10KG x 2 BLOCKS	1 KG	22.00
9	FISH-SALMON TROUT GUTTED 4/5KG/NOS (NORWAY AIRFLOWN-CHILLED)三文鱼鳟(空运-刺身专用)	± 23KG/CTN	1 KG	
10	FISH-SALMON TROUT FILLET PORTION CUT(FROZEN)(VP)	VP; 1KG; 4-6 FILLET PER SET	1 PKT	135.00
11	FISH-SALMON FROZEN GUTTED 4/5KG/NOS (+-30KG/CTN)三文鱼	±30KG, IQF	1 KG	66.00
12	FISH-SALMON FILLET 1/2 KG/FILLET FROZEN (PREMIUM GRADE)(10KG/CTN) 三文鱼片(带皮)	20KG/CTN; IQF	1 KG	90.00
13	FISH-SALMON BELLY FLAPS (FILLET)(NORWAY) 三文鱼腩肉 (带皮)	12.5/CTN	1 KG	29.00
14	BONFISKEN-SMOKED SALMON TRADITIONAL 100GM; (10PKT X 4, SMALL PKT X 100G) 烟熏三文鱼肉 (生食级)	40PKT/CTN	1 PKT	25.00
15	BONFISHEB DELI-SALMON CHOWDER SOUP (250GM/TUB) (24PKT/CTN) 三文鱼浓汤	24PKT X 0.25KG	1 PKT	16.00

NO	DESCRIPTION	PACKING	QTY	AMOUNT (RM)
G	FISH HEAD PRODUCTS 鱼头类			
1	FISH-SALMON HEAD (WHOLE CLEAN) 三文鱼头 (净)	10KG,IQF	1 KG	17.00
2	FISH-LING HEAD (NEW ZEALAND)(11KG/CTN) 凌鱼头 (净)	20KG/CTN	1 KG	24.00
3	FISH-GROUPER HEAD WHOLE CLEAN (INDONESIA)(±20KG/CTN) 石斑鱼头 (净)		1 KG	27.00
4	FISH-SNAPPER RED HEAD WHOLE CLEAN (KKM KEPALA)(±20KG/CTN) 红鱼鱼头 (净)		1 KG	36.00
5	FISH-GROUPER RED CORAL HEAD WHOLE CLEAN 七星斑鱼头 (净)	10KG/CTN	1 KG	30.00
6	FISH-THREADFIN HEAD (KURAU) WHOLE CLEAN 顺丰鱼头 (小规格)		1 KG	34.00
H	FISH EGG (ROE) 鱼蛋 (鱼卵) :			
1	FISH-ARRIDAE EGG (ROE)(IKAN MAYONG TELUR) (500GM X 20PKT) 海多利鱼蛋 (鱼卵)	20PKTX0.5KG	1 PKT	22.00
2	FISH-TUNA EGG(ROE)(YELLOWFIN)(10KG/CTN) 吞拿鱼蛋 (鱼卵)	10KG/CTN,IQF	1 KG	33.00
I	FISH PRODUCTS 鱼类:			
1	FISH-SHARK (ROUND SHARK) 乌翅鲨鱼 (咸淡水特选)	20KG/CTN	1 KG	30.00
2	FISH-SHARK WHOLE CLEAN (ROUND SHARK) 乌翅鲨鱼 (咸淡水特选) (去沙去内脏)	10KG/CTN, IQF	1 KG	33.00
3	FISH-CATFISH SILVER WHOLE CLEAN 800/1000 GM/PC (10KG/CTN;100% NET)(PATIN - CATRA) 巴丁鱼	IQF;10KG/CTN; 100% NET	1 KG	19.00
4	FISH-CATFISH SILVER WHOLE CLEAN BUTTERFLY 800/1000 GM/PC (10KG/CTN; 20% GLAZING) (PATIN) 巴丁鱼	10KG/CTN; 20% GLAZING	1 KG	15.00
5	FISH-BARRAMUNDI WHOLE CLEAN 400/600 (SEABASS/SIKAP) (10KG/CTN; 20% GLAZING) 石甲鱼(净)	10KG/CTN (SIZE BEFORE GLAZING)	1 KG	25.00
6	FISH-BARRAMUNDI WHOLE CLEAN 600/800 (SEABASS/SIKAP) (10KG/CTN; 20% GLAZING) 石甲鱼(净)	10KG/CTN (SIZE BEFORE GLAZING)	1 KG	22.00
7	FISH-BARRAMUNDI WHOLE CLEAN 800/1000 (SEABASS/SIKAP) (10KG/CTN; 20% GLAZING) 石甲鱼(净)	10KG/CTN (SIZE BEFORE GLAZING)	1 KG	22.00
8	FISH-TURBOT WHOLE CLEAN 600/800 GM/PC (10KG/CTN;IQF VP;10% GLAZING) 多宝鱼 (净)	IQF VP;10KG/CTN; 10% GLAZING	1 KG	92.00
9	FISH-TURBOT WHOLE CLEAN 800/1000 GM/PC (10KG/CTN;IQF VP;10% GLAZING) 多宝鱼 (净)	IQF VP;10KG/CTN; 10% GLAZING	1 KG	92.00
10	FISH-TURBOT WHOLE CLEAN 1000/1200 GM/PC (10KG/CTN;IQF VP;10% GLAZING) 多宝鱼 (净)	IQF VP;10KG/CTN; 10% GLAZING	1 KG	92.00
11	FISH-GROUPER HYBRID WHOLE CLEAN 600/800 GM/PC (TW PREMIUM GRADE) 龙虎斑 (全净)	10KG/CTN; IQF	1 KG	76.00

NO	DESCRIPTION	PACKING	QTY	AMOUNT (RM)
12	FISH-GROUPER HYBRID WHOLE CLEAN 800/1000 GM/PC (TW PREMIUM GRADE) 龙虎斑 (全净)	10KG/CTN; IQF	1 KG	76.00
13	FISH-GROUPER HYBRID WHOLE CLEAN 1000/1200 GM/PC (TW PREMIUM GRADE) 龙虎斑 (全净)	10KG/CTN; IQF	1 KG	76.00
14	FISH-GROUPER HYBRID WHOLE CLEAN 1200/1400 GM/PC (TW PREMIUM GRADE) 龙虎斑 (全净)	10KG/CTN; IQF	1 KG	76.00
15	FISH-GROUPER HYBRID WHOLE CLEAN 1400/1600 GM/PC (TW PREMIUM GRADE) 龙虎斑 (全净)	10KG/CTN; IQF	1 KG	76.00
16	FISH-SILVER SILLAGO FISH WC (M) NIKUDO VP (500GMX20PKT)(IKAN BULUS BERSIH) 沙尖鱼(净)		1 PKT	19.00
17	FISH-GREY MULLET WHOLE CLEAN MIX SIZE (BELANAK BERSIH) (500GMX20PKT) (10KG)(NIKUDO)(VP) 斋鱼 (乌鱼)	500GMX20PKT	1 KG	27.00
18	FISH-POMFRET GOLDEN WHOLE CLEAN 800/1000G/PC (IKAN BAWAL EMAS BERSIH) 金鲳鱼(净)	IQF VP; 10KG/CTN; 20% GLAZING	1 KG	54.00
19	FISH-POMFRET GOLDEN 300/400 GM/PC(10KG/CTN; 20% GLAZING)(IKAN BAWAL EMAS 金鲳鱼(原条)	10KG/CTN	1 KG	32.00
20	FISH-POMFRET BLACK WHOLE CLEAN 400/600 (NIKUDO VP) 沙巴特选-黑鲳 (净)	10KG/CTN	1 KG	52.00
21	FISH-MACKEREL INDIAN 4/6 PCS/KG (10KG/CTN; 10% Glazing)(Vietnam)(IKAN KEMBONG) 甘望鱼	10KG/CTN	1 KG	16.00
22	FISH-MACKEREL INDIAN 6/8 PCS/KG (10KG/CTN; 10% Glazing)(Vietnam)(IKAN KEMBONG) 甘望鱼	10KG/CTN	1 KG	13.00
23	FISH-MACKEREL INDIAN 4/6 PCS/KG (10KG/CTN; 10% Glazing)(India)(IKAN KEMBONG) 甘望鱼	10KG/CTN	1 KG	12.00
24	FISH-MACKEREL INDIAN 6/8 PCS/KG (10KG/CTN; 10% Glazing)(India)(IKAN KEMBONG) 甘望鱼	10KG/CTN	1 KG	10.00
25	FISH-WHITE BAIT (SILVER FISH) 8-10CM (1KG X 10PKT; 35% GLAZING) 白饭鱼	10PKTX1KG	1 KG	54.00
26	FISH-COD HEADLESS GUTTED 4/6KG 银鳕鱼	Running Weight ±30KG/CTN	1 KG	257.00
27	FISH-HALIBUT GREENLAND HEADLESS GUTTED 3000/5000 IQF 冰岛比目鱼 (去头)		1 KG	75.00
28	FISH-CAPELIN WHOLE ROUND-MEDIUM 170GM± (SHISAMO) (8PCS/PKT; 30PKT/CTN) 多春鱼	170G/PKT, 30PKT/CTN	1 PKT	9.00
29	FISH-MACKEREL SABA 400/600 GM/PC (20KG/CTN) 挪威鲭鱼	20KG/CTN	1 KG	21.00
30	FISH-PACIFIC SAURY 100/150GM/PC (#1; 65-75 PCS/CTN) (SANMA)(10KG/CTN) (COLOLABIS SAIRA)(TAIWAN)秋刀鱼	10KG/CTN; NET:9KG-9.5KG/CTN	1 KG	38.00
31	FISH-PACIFIC SAURY 90/110GM/PC (#3;95-100PCS/CTN) (SANMA)(10KG/CTN) (COLOLABIS SAIRA)(TAIWAN)秋刀鱼	10KG/CTN; NET:9KG-9.5KG/CTN	1 KG	26.00
32	FISH-MACKEREL HORSE 6/8 or 8/10PCS/KG (SARDIN WHITE) 沙丁鱼	10KG/CTN	1 KG	12.00
33	FISH-SCAD ROUND 16/20 (BLACK SARDIN/SARDIN HITAM) (BASUNG/SELAYANG) 沙巴沙丁鱼 (巴松)	10KG/CTN	1 KG	11.00
34	FISH-SCAD HARDTAIL 4/6 (CENCARU) 硬尾鱼	10KG/CTN	1 KG	10.00
35	FISH-STINGRAY MEAT U/500 (PARI BUNGA/MINYAK) (10KG/CTN) 浦鱼 (油浦鱼/花浦鱼)	10KG/CTN	1 KG	41.00

NO	DESCRIPTION	PACKING	QTY	AMOUNT (RM)
36	FISH-STINGRAY MEAT 500/1000 (PARI BUNGA/MINYAK) (10KG/CTN) 浦鱼 (油浦鱼/花浦鱼)	10KG/CTN	1 KG	41.00
37	FISH-STINGRAY MEAT 1000/2000 (PARI BUNGA/MINYAK) (10KG/CTN) 浦鱼 (油浦鱼/花浦鱼)	10KG/CTN	1 KG	41.00
38	FISH-STINGRAY MEAT 2000/3000 (PARI BUNGA/MINYAK) (20KG/CTN) 浦鱼 (油浦鱼/花浦鱼)	20KG/CTN	1 KG	36.00
39	FISH-STINGRAY MEAT 3000UP (PARI BUNGA/MINYAK) (20KG/CTN) 浦鱼 (油浦鱼/花浦鱼)	20KG/CTN	1 KG	31.00
40	FISH-RIBBON SLICED IQF (VACCUM PACKED) (500GM*20PKT) 带鱼 (切断)	500G/PKT, 20PKT/CTN	1 PKT	14.00
41	FISH-MACKEREL SPANISH BARRED 1000/2000 (BATANG) 马鲛鱼-竹鲛 (印尼原条)	±25KG	1 KG	31.00
42	FISH-MACKEREL SPANISH BARRED 2000/3000 (BATANG) 马鲛鱼-竹鲛 (印尼原条)	±25KG	1 KG	36.00
43	FISH-MACKEREL SPANISH BARRED 3000/5000 (BATANG) 马鲛鱼-竹鲛 (印尼原条)	±33KG	1 KG	36.00
44	FISH-MACKEREL SPANISH BARRED 5000/7000 (BATANG) 马鲛鱼-竹鲛 (印尼原条)	±33KG	1 KG	36.00
45	FISH-POMFRET CHINESE 300/400 GM/PC (20KG/CTN) (SABAH PREMIUM GRADE) 沙巴特选-斗鲳鱼/斗底鲳 (原条)	20KG/CTN	1 KG	75.00
46	FISH-POMFRET CHINESE 400/500 GM/PC (20KG/CTN) (SABAH PREMIUM GRADE) 沙巴特选-斗鲳鱼/斗底鲳 (原条)	20KG/CTN	1 KG	88.00
47	FISH-POMFRET CHINESE 500/600 GM/PC (20KG/CTN) (SABAH PREMIUM GRADE) 沙巴特选-斗鲳鱼/斗底鲳 (原条)	20KG/CTN	1 KG	108.00
48	FISH-POMFRET CHINESE 600/700 GM/PC (20KG/CTN) (SABAH PREMIUM GRADE) 沙巴特选-斗鲳鱼/斗底鲳 (原条)	20KG/CTN	1 KG	122.00
49	FISH-POMFRET CHINESE 700/800 GM/PC (20KG/CTN) (SABAH PREMIUM GRADE) 沙巴特选-斗鲳鱼/斗底鲳 (原条)	20KG/CTN	1 KG	146.00
50	FISH-POMFRET CHINESE 800/1000 GM/PC (20KG/CTN) (SABAH PREMIUM GRADE) 沙巴特选-斗鲳鱼/斗底鲳 (原条)	20KG/CTN	1 KG	169.00
51	FISH-POMFRET CHINESE 1000/1200 GM/PC (20KG/CTN) (SABAH PREMIUM GRADE) 沙巴特选-斗鲳鱼/斗底鲳 (原条)	20KG/CTN	1 KG	169.00
52	FISH-POMFRET CHINESE 1200/1500 GM/PC (20KG/CTN) (SABAH PREMIUM GRADE) 沙巴特选-斗鲳鱼/斗底鲳 (原条)	20KG/CTN	1 KG	156.00
53	FISH-POMFRET CHINESE 1500UP GM/PC (20KG/CTN) (SABAH PREMIUM GRADE) 沙巴特选-斗鲳鱼/斗底鲳 (原条)	20KG/CTN	1 KG	146.00
54	FISH-POMFRET WHITE 300/400 GM/PC (20KG/CTN) (SABAH PREMIUM GRADE) 沙巴特选-白鲳鱼 (原条)	20KG/CTN	1 KG	75.00
55	FISH-POMFRET WHITE 400/500 GM/PC (20KG/CTN) (SABAH PREMIUM GRADE) 沙巴特选-白鲳鱼 (原条)	20KG/CTN	1 KG	88.00
56	FISH-POMFRET WHITE 500/600 GM/PC (20KG/CTN) (SABAH PREMIUM GRADE) 沙巴特选-白鲳鱼 (原条)	20KG/CTN	1 KG	106.00
57	FISH-POMFRET WHITE 600/700 GM/PC (20KG/CTN) (SABAH PREMIUM GRADE) 沙巴特选-白鲳鱼 (原条)	20KG/CTN	1 KG	111.00
58	FISH-POMFRET WHITE WHOLE CLEAN U/50 GM/PC (NIKUDO)(VP) (500GM X 20PKT) 沙巴特选-白鲳鱼 (全净)	(20PKTX500G)	1 PKT	14.00

NO	DESCRIPTION	PACKING	QTY	AMOUNT (RM)
59	FISH-POMFRET WHITE WHOLE CLEAN 50/100 GM/PC (NIKUDO)(VP)(500GM X 20PKT)沙巴特选-白鲳鱼 (全净)	(20PKTX500G)	1 PKT	19.00
60	FISH-POMFRET WHITE WHOLE CLEAN 100/200 GM/PC (NIKUDO)(VP)(500GM X 20PKT) 沙巴特选-白鲳鱼 (全净)	0.5KG/PKT; 20PKT/CTN	1 PKT	27.00
61	FISH-POMFRET WHITE WHOLE CLEAN 200/300 GM/PC (NIKUDO)(VP)(2PCS/PKT)(10KG/CTN) 沙巴特选-白鲳鱼 (全净)	10KG/CTN	1 KG	68.00
62	FISH-POMFRET WHITE WHOLE CLEAN 300/400 GM/PC(NIKUDO) (VP)(10KG/CTN) 沙巴特选-白鲳鱼 (全净)	10KG/CTN	1 KG	86.00
63	FISH-POMFRET WHITE WHOLE CLEAN 400/500 GM/PC(NIKUDO)(VP)(10KG/CTN) 沙巴特选-白鲳鱼 (全净)	10KG/CTN	1 KG	92.00
64	FISH-POMFRET CHINESE WHOLE CLEAN 200/300 (NIKUDO) (VP)(2PCS/PKT)(10KG/CTN) 沙巴特选-斗鲳鱼 (全净)	10KG/CTN	1 KG	68.00
65	FISH-POMFRET CHINESE WHOLE CLEAN 300/400 (NIKUDO)(VP)(10KG/CTN) 沙巴特选-斗鲳鱼 (全净)	10KG/CTN	1 KG	86.00
66	FISH-POMFRET CHINESE WHOLE CLEAN 400/500 (NIKUDO)(VP)(10KG/CTN) 沙巴特选-斗鲳鱼 (全净)	10KG/CTN	1 KG	106.00
67	FISH-POMFRET CHINESE WHOLE CLEAN 500/600 (NIKUDO)(VP)(10KG/CTN) 沙巴特选-斗鲳鱼 (全净)	NIKUDO VP 20KG/CTN IQF	1 KG	133.00
68	FISH-POMFRET CHINESE WHOLE CLEAN 600/700 (NIKUDO) (VP)(10KG/CTN) 沙巴特选-斗鲳鱼 (全净)	NIKUDO VP 20KG/CTN IQF	1 KG	156.00
69	FISH-POMFRET CHINESE WHOLE CLEAN 700/800 (NIKUDO) (VP)(10KG/CTN) 沙巴特选-斗鲳鱼 (全净)	NIKUDO VP 20KG/CTN IQF	1 KG	173.00
J	DRY PRODUCT 干海鲜类:			
1	OTHERS-SEAWEED SUPER PURPLE (SEA BIRD NEST) 干海藻-麒麟草 (紫色种)	10PKT X 1KG	1 KG	27.00
2	OTHERS-SEAWEED SUPER YELLOW (SEA BIRD NEST) 干海藻-麒麟草 (黄色种)	10PKT X 1KG	1 KG	27.00
3	OTHERS-AIR BLADDER DORY-SMALL (DRY) 成鱼鳔-干 (大规格)		1 KG	203.00
4	OTHERS-AIR BLADDER DORY U/50-LARGE (DRY) 成鱼鳔-干 (小规格)		1 KG	203.00
5	OTHERS-AIR BLADDER EEL BROKEN (PERUT OSE) (DRY) 鳗鱼鳔-干 (开边) (小规格)		1 KG	810.00
6	OTHERS-AIR BLADDER EEL 6"-12"(PERUT OSE) (DRY) 鳗鱼鳔-干 (小规格)		1 KG	810.00
7	OTHERS-AIR BLADDER EEL 12"-15"(PERUT OSE) (DRY) 鳗鱼鳔-干 (中规格)		1 KG	1,620.00
8	OTHERS-AIR BLADDER EEL 16"/UP(PERUT OSE) (DRY) 鳗鱼鳔-干 (中规格)		1 KG	2,295.00
9	V-FISH SKIN (CRACKER) (PRE-FRY) (600GM X 8PKT) 炸鱼皮	600GM	1 PKT	58.00

NO	DESCRIPTION	PACKING	QTY	AMOUNT (RM)
K	JAPANESE SEASONED SERIES 日式类:			
1	V-SEASONED BABY OCTOPUS (CHUKA IDAKO) (2KG/TUB; 4TUB/BUNDLE) 日式即食章鱼	20GM/PKT	1 KG	53.00
2	V-CHONG HWA SALAD (SEASONED SEAWEED) (CHUKA WAKAME) (2KG/TUB; 4TUB/BUNDLE) 日式即食海藻	200GM/PKT	1 KG	22.00
3	V-SEASONED SCALLOP FRING (CHUKA HOTATE) 日式带子裙边	2KG/BOX, 4BOX/SET OR 200GM/PKT	1 KG	45.00
4	V-SEASONED CLAM MEAT 日式即食螺肉 (蒜味螺肉)	2KG/BOX, 4BOX/SET OR 200GM/PKT	1 KG	40.00
5	EDAMAME (JAPANESE GREEN SOY BEAN) 日式毛豆	500G/PKT, 20PKT/ CTN	1 PKT	8.00
L	OTHERS 其他特殊产品类:			
1	V-SHARK FIN (M)(NET: 400GM) 鲍翅 (真鱼翅)	500GM/PKT; 20PKT/CTN;	1 PKT	72.00
2	V-VEGETABLE SHARK FIN (NET: 400GM)(500GM X 50PKT) 斋鱼翅	500GM X 50PKT	1 PKT	13.00
3	FISH-SHARK NOSE WHOLE ROUND 鲨鱼唇 (原条; 不洗沙)	500/1000 GM/PC	1 KG	41.00
4	FISH-SHARK NOSE WHOLE ROUND 鲨鱼唇 (原条; 不洗沙)	1000/2000 GM/PC	1 KG	41.00
5	FISH-SHARK NOSE WHOLE ROUND 鲨鱼唇 (原条; 不洗沙)	2000/3000 GM/PC	1 KG	41.00
6	FISH-SHARK NOSE WHOLE CLEAN 500/1000 GM/PC 鲨鱼唇 (净, 已洗沙)	10KG/CTN	1 KG	75.00
7	FISH-SHARK NOSE WHOLE CLEAN 1000UP GM/PC 鲨鱼唇 (净, 已洗沙)	10KG/CTN	1 KG	75.00
8	OTHERS-PG SMOKED DUCK BREAST 250GM(HALAL) (40PKT/CTN) 烟熏鸭胸肉 (本地 PG LEAN HWA - 清真品牌)	40PKT/CTN	1 PKT	22.00
9	OTHERS-SMOKED DUCK BREAST (RABBIT BRAND) (10KG/CTN) 烟熏鸭胸肉 (兔子牌)	10KG/CTN, ±0.2 KG/PKT	1 KG	33.00
10	V-OTAK-OTAK FISH (50X0.19KG) 鱼肉乌达	50X0.19KG	1 PKT	9.00
11	V-OTAK-OTAK PRAWN (50X0.19KG) 虾肉乌达	50X0.19KG	1 PKT	9.00
12	V-OTAK OTAK FISH STICK LEAF (50PCS X 10PKT) 乌达 (支装)	50PCS/PKT; 10PKT/CTN (500PCS/CTN)	1 PKT	58.00
13	OTHERS-DUCK FEET (14KG/CTN, 1KG/PKT) 鸭脚	14KG/CTN, 1KG/PKT	1 KG	11.00
14	OTHER-DUCK GIZZARD (50-96GM/PC)(14PKT X 1KG) 鸭胗	11-20PCS/PKT/KG; 14PKT/CTN	1 KG	15.00
15	OTHER-DUCK INTESTINE (12PKT X 1KG) 鸭肠	1KG/PKT; 12PKT/CTN	1 KG	36.00
16	OTHERS-DUCK TOUNGE (8-12GM/PCS) (80-125PC; ±1KG/PKT) (±1KGX14PKT) 鸭舌	14PKT X 1KG/CTN	1 KG	43.00
17	OTHERS-DUCK WING (14PKT X 1KG) 鸭翅膀	14KG/CTN, 1KG/PKT	1 KG	12.00
18	OTHER-DUCK WHOLE LEG 鸭全腿	4/5PC/PKT, 1KG x 14 PKT	1 KG	35.00

NO	DESCRIPTION	PACKING	QTY	AMOUNT (RM)
M	CAVIAR FROM FRANCE 鱼子酱:			
1	CAVIAR BAERI CLASSIC - 30G	1 TIN - EX-STOCK	30g	260.00
2	CAVIAR BAERI CLASSIC - 50G	1 TIN - EX-STOCK	50g	420.00
3	CAVIAR BAERI VINTAGE - 30G - (8 MONTHS)	1 TIN - EX-STOCK	30g	300.00
4	CAVIAR BAERI VINTAGE - 50G - (8 MONTHS)	1 TIN - INDENT	50g	CALL
5	CAVIAR BAERI PRESTIGE - 30G - (3MM ROE SIZE)	1 TIN - INDENT	30g	430.00
6	CAVIAR BAERI PRESTIGE - 50G - (3MM ROE SIZE)	1 TIN - INDENT	30g	CALL
7	CAVIAR BAERI ORIGIN - 30G - (>8MONTHS)	1 TIN - INDENT	30g	360.00
8	CAVIAR BAERI ORIGIN - 50G - (>8MONTHS)	1 TIN - INDENT	50g	CALL
9	CAVIAR BAERI PRIMEUR - 30G - (1 MONTH)	1 TIN - INDENT	30g	360.00
10	CAVIAR BAERI PRIMEUR - 50G - (1 MONTH)	1 TIN - INDENT	50g	CALL
11	CAVIAR OSCIETRE CLASSIC - 30G	1 TIN - EX-STOCK	30g	280.00
12	CAVIAR OSCIETRE CLASSIC - 50G	1 TIN - EX-STOCK	50g	450.00
13	CAVIAR OSCIETRE - 30G	1 TIN - INDENT	30g	670.00
14	CAVIAR OSCIETRE - 50G	1 TIN - INDENT	50g	CALL
15	CAVIAR OSCIETRE PRESTIGE - 30G - (3MM ROE)	1 TIN - INDENT	30g	470.00
16	CAVIAR OSCIETRE PRESTIGE - 50G - (3MM ROE)	1 TIN - INDENT	50g	CALL
17	CAVIAR OSCIETRE GRAND CRU - 30G	1 TIN - INDENT	30g	580.00
18	CAVIAR OSCIETRE GRAND CRU - 50G	1 TIN - INDENT	50g	CALL
19	CAVIAR JASMIN (LOW SALT) - 30G	1 TIN - INDENT	30g	380.00
20	CAVIAR JASMIN (LOW SALT) - 50G	1 TIN - INDENT	50g	CALL
21	CAVIAR BELUGA - 30G	1 TIN - INDENT	30g	1,020.00
22	CAVIAR BOUTARGUE / BOTTARGA	1 TIN - EX-STOCK	±100g	1,190.00
23	AIKKA OSCIETRA - 30G	1 TIN - INDENT	30g	190.00
24	AIKKA OSCIETRA - 50G	1 TIN - EX-STOCK	50g	310.00
25	AIKKA OSCIETRA - 100G	1 TIN - INDENT	100g	600.00
N	FOIE GRAS 鹅肝:			
1	WHOLE GOOSE LIVER	(650GM-800GM) 1KG/PKT	1 KG	530.00
2	SLICED GOOSE LIVER	(40-60GM) 1KG/PKT	1 KG	540.00
3	WHOLE DUCK LIVER	(500GM-600GM) 1KG/PKT	1 KG	470.00
4	SLICED DUCK LIVER	(25-40GM) 1KG/PKT	1 KG	490.00
5	SLICED DUCK LIVER	(40-60GM) 1KG/PKT	1 KG	500.00
6	DEVEINED WHOLE DUCK LIVER	(±450GM) 1KG/PKT	1 KG	490.00

NOTES





UMI GOURMET EMPIRE

(003559469-U)

海洋美食帝国



PREMIUM JAPAN BAFUN UNI NARABE STYLE

250 GMS/TRAY

Prices are announced via **WhatsApp**
every Fridays / Saturdays*

价格每周五/周六通过 **WhatsApp** 公布。



**AIR
FLOWN
WEEKLY***
(TUESDAY & FRIDAY)



PRE-ORDER ONLY



017-7087188



UMI GOURMET EMPIRE
(003559469-U)
海洋美食帝国

**B25, Blk A, Kelana Centre Point,
Jalan SS7/19, Kelana Jaya,
47301 Petaling Jaya, Selangor, Malaysia.**



+6017-708 7188

